

## Mini-Pots

- Screw on lid
- Satin finish
- Multi purpose small volume containers
- 316L stainless steel
- Crevice free interior



### QUICK QUOTE

### ONLINE PRICING

Part No.	Nominal Volume	Diameter	Height
675 A4267	7ml	16mm	45mm
675 A42625	25ml	38mm	40mm
675 A42650	50ml	50mm	50mm
675 A426100	100ml	50mm	71mm
675 A426250	250ml	75mm	75mm
675 A426500	500ml	100mm	80mm
675 A426750	750ml	100mm	117mm
675 A4261000	1000ml	100mm	155mm

CLICK STOCK # FOR SPECIFICATIONS

Accessories

## Clamp Containers



- Multi purpose containers
- 316 stainless steel
- Crevice free interior
- Supplied with lid, clamp and silicone seal (FDA acceptable grade)
- Wide 4" (100mm) diameter tri-clamp lid
- Satin finish

### QUICK QUOTE

### ONLINE PRICING

Part No.	Nominal Volume	Diameter	Height
675 A56601	1 litres	130mm	107mm
675 A56602	2 litres	130mm	182mm
675 A56605	5 litres	180mm	255mm
675 A56610	10 litres	220mm	394mm
675 A56620	20 litres	305mm	394mm

CLICK STOCK # FOR SPECIFICATIONS

## Stainless Containers (316L ss)

316L stainless steel bottles with Tri-ferrule Lids



The QAQC LAB range of Stainless Containers with tri-ferrule fittings are very popular for pharmaceutical, chemical, and food industries. The high quality finish and 316L stainless steel construction make them ideal for most applications. Our range of Stainless Containers is available with 4 lid sizes.

The Tri-Ferrule lid (BS 4825-3) ensures that the containers are both powder-tight and watertight. The Tri-ferrule system enables the containers to be clamped directly on to other pieces of processing equipment.

The containers can also be electro-polished as an option.

- Multi-purpose containers
- 316L stainless steel body and lid.
- Robust construction
- Crevice free interior
- Tri-ferrule style Lids (BS 4825-3)
- All welds ground and polished
- Complete with lid, silicone gasket (FDA compliant) and clampband
- Fully air-tight and leak-proof

Volume 1ml to 100ml

### Mini TriFerrule Containers



CLICK STOCK # FOR SPECIFICATIONS

Part No.	Nominal Volume	Body Diameter	Body Height	Lid Size	Material
675 A8161	1ml	48mm	35mm	1.5"	316L ss
675 A8162	2ml	48mm	35mm	1.5"	316L ss
675 A8165	5ml	48mm	35mm	1.5"	316L ss
675 A81610	10ml	48mm	35mm	1.5"	316L ss
675 A81625	25ml	48mm	35mm	1.5"	316L ss
675 A81650	50ml	48mm	58mm	1.5"	316L ss
675 A816100	100ml	64mm	70mm	2"	316L ss

#### Spares

675 K20115	Spare 1.5" Silicone Gasket - FDA acceptable grade
675 K20215	Spare 1.5" EPDM Gasket - FDA acceptable grade
675 K20315	Spare 1.5" Viton Gasket - FDA acceptable grade
675 K20415	Spare 1.5" PTFE Gasket - FDA acceptable grade
675 K2012	Spare 2" Silicone Gasket - FDA acceptable grade
675 K2022	Spare 2" EPDM Gasket - FDA acceptable grade
675 K2032	Spare 2" Viton Gasket - FDA acceptable grade
675 K2042	Spare 2" PTFE Gasket - FDA acceptable grade

[QUICK QUOTE](#)

[ONLINE PRICING](#)



**QAQC LAB**

[www.qclabequipment.com](http://www.qclabequipment.com)

## Stainless Bottle GL45 (316L ss)

Stainless Bottles GL45 are made from high quality 316L stainless steel. The bottles have the highly popular GL45 thread which enables them to be easily connected to other items of processing equipment.

Stainless Bottles GL45 are available in three sizes and are electro-polished as standard.

Volume 100ml to 1000ml

- Multi-purpose containers
- GL45 lid
- Heavy duty construction
- Crevice free interior
- 316L stainless steel construction
- Lid gasket made from PTFE
- Electro-polished



CLICK STOCK # FOR SPECIFICATIONS

Part No.	Nominal Volume	Container Diameter	Container Height
675 A886100	100ml	45mm	89mm
675 A886500	500ml	88mm	141mm
675 A8861000	1000ml	108mm	175mm

[QUICK QUOTE](#)

[ONLINE PRICING](#)



## 316L Stainless PharmaBottles® (316L ss)

Volume 500ml to 1000ml

Stainless PharmaBottles® are ideal for use with powders and liquids. Each container has a highly polish finish and a watertight screw on lid.

Stainless PharmaBottles® are supplied with an FDA acceptable silicone gasket in the lid.

- Multi purpose containers
- 316L stainless steel body and lid
- Robust construction
- Crevice free interior
- All welds ground and polished
- Complete with screw on lid
- Silicone (FDA acceptable) gasket in lid

CLICK STOCK # FOR SPECIFICATIONS



Part No.	Nominal Volume	Internal Neck Diameter	Bottle Diameter	Height	Material
675 A846500	500ml	48mm	83mm	154mm	316L ss
675 A8461000	1000ml	48mm	102mm	178mm	316L ss

Bottles & Containers

## CONTAINERS With Tri Ferrule Clamped Lids



The QAQC LAB containers with tri-ferrule fittings are a very popular range for pharmaceutical, chemical and food industries. The high quality finish and 316L stainless steel construction make them ideal for most applications.

The tri ferrule lid profile means they have a robust lid system that also has the advantage that it can be clamped to other tri clamp systems. This gives a dust tight connection system.

The containers can also be electro-polished as an option.

### Stainless Containers (50mm Top Diameter)



The A836 range are a popular selection of containers. Ideal for storing powders and liquids.

The 2" tri ferrule style lid is a popular feature as it allows it to be clamped to anything with the same profile.

The robust clamped lid gives a powder and water tight fit.

- Multi purpose containers
- Robust construction
- Crevice free interior
- Standard 2" lid (Tri-ferrule style BS 4825-3)
- All welds ground and polished
- Complete with lid, silicone (FDA compliant) and clamband
- 316L stainless steel body and lid.

CLICK STOCK # FOR SPECIFICATIONS

#### QUICK QUOTE

#### ONLINE PRICING

Part No.	Nominal Volume	Body Diameter	Height	Material
675 A836250	250ml	83mm	103mm	316L stainless steel
675 A836500	500ml	83mm	153mm	316L stainless steel
675 A8361000	1000ml	102mm	183mm	316L stainless steel



## Stainless Containers (100mm Top Diameter)

Our range of Stainless Containers is ideal for use with powders and liquids. The high quality crevice free finish makes these containers ideal for the most demanding of applications.

Available from stock in a wide range of sizes.

- Multi purpose containers
- Robust construction
- Crevice free interior
- Standard 4" lid (Tri-ferrule style BS 4825-3)
- All welds ground and polished
- Complete with lid, silicone (FDA compliant) and clampband
- 316L stainless steel body and lid.



[QUICK QUOTE](#)

[ONLINE PRICING](#)



CLICK STOCK # FOR SPECIFICATIONS

Robust lid is quick and easy to remove  
Lid, clamp and seal included in price.



Part No.	Nominal Volume	Body Diameter	Height	Material
675 A4161	1 Litre	104mm	152mm	316L stainless steel
675 A4162	2 Litres	104mm	227mm	316L stainless steel
675 A4165	5 Litres	164mm	316mm	316L stainless steel
675 A4168	8 Litres	212mm	283mm	316L stainless steel
675 A41610	10 Litres	215mm	364mm	316L stainless steel
675 A41615	15 Litres	275mm	360mm	316L stainless steel
675 A41620	20 Litres	275mm	440mm	316L stainless steel
675 A41630	30 Litres	303mm	602mm	316L stainless steel

## Containers with GL45 Threads



**QAQC LAB**

[www.qclabequipment.com](http://www.qclabequipment.com)

Our range of GL45 containers have the advantage that the lid can be fully removed for full cleaning. The lid comes with a built in adapter so they will mate with standard GL45 threads.

The containers are available in a variety of sizes and come as a standard with a highly polished finish.



- Multi purpose containers
- Heavy duty construction
- Crevice free interior
- 316L stainless steel construction
- Lid can be completely removed for full cleaning

CLICK STOCK # FOR SPECIFICATIONS

### External GL45 Thread (with screw on Cap and silicone seal)



Part No.	Nominal Volume	Body Diameter	Height
675 A4171	1 Litre	104mm	182mm
675 A4172	2 Litres	104mm	257mm
675 A4175	5 Litres	164mm	346mm
675 A4178	8 Litres	212mm	313mm
675 A41710	10 Litres	215mm	394mm
675 A41715	15 Litres	275mm	360mm
675 A41720	20 Litres	275mm	470mm

[QUICK QUOTE](#)

[ONLINE PRICING](#)



### Internal GL45 Thread (not supplied with a Cap)



Part No.	Nominal Volume	Body Diameter	Height
675 A4181	1 Litre	104mm	182mm
675 A4182	2 Litres	104mm	257mm
675 A4185	5 Litres	164mm	346mm
675 A4188	8 Litres	212mm	313mm
675 A41810	10 Litres	215mm	394mm
675 A41815	15 Litres	275mm	360mm
675 A41820	20 Litres	275mm	470mm

[QUICK QUOTE](#)

[ONLINE PRICING](#)



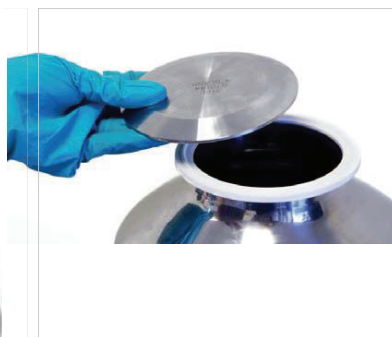
## Stainless Containers (Large Volume)

### Tri-ferrule Style

Our range of Stainless Containers is ideal for use with powders and liquids. The high quality crevice free finish makes these containers ideal for the most demanding of applications.

Available from stock in a wide range of sizes.

- Multi purpose containers
- Robust construction
- Crevice free interior
- 6" lid (Tri-ferrule style BS 4825-3)
- All welds ground and polished
- Complete with lid, silicone (FDA compliant) and clampband
- 316L stainless steel body and lid.



Robust lid is quick and easy to remove  
Lid, clamp and seal included in price.



PART NO.	VOLUME	HEIGHT	DIAMETER
675 A85650	50 L	550 mm	400 mm
675 A85675	75 L	650 mm	450 mm
675 A856100	100 L	670 mm	500 mm

[QUICK QUOTE](#)
[ONLINE PRICING](#)



# Toggle Drums



The QAQC Lab range of heavy duty toggle drums are ideal for storage and production. As standard they come with a fully welded handle, silicone seal (FDA grade) and lid. The lid is secured by using the pull down latches (toggle clamps). Manufactured from high grade 316L stainless steel the containers are suitable for most applications.

The toggle drums have a high quality, polished finish which enables complete and thorough cleaning. Large stocks are kept for quick delivery.

- Multi purpose open top drums
- Heavy duty construction
- Crevice free interior
- 316L stainless steel body and lid
- Silicone gasket (food grade, FDA acceptable)
- Lid can be completely removed for full cleaning



Part No.	Nominal Volume	Number of Toggles	Internal Diameter	Nominal Height	Material (Body & Lid)
675 A9262	2 Litres	2	140mm	160mm	316L stainless steel
675 A9265	5 Litres	4	196mm	200mm	316L stainless steel
675 A9268	8 Litres	4	196mm	300mm	316L stainless steel
675 A92610	10 Litres	4	230mm	270mm	316L stainless steel
675 A92615	15 Litres	4	230mm	380mm	316L stainless steel
675 A92620	20 Litres	4	300mm	300mm	316L stainless steel
675 A92625	25 Litres	4	300mm	380mm	316L stainless steel
675 A92630	30 Litres	4	300mm	450mm	316L stainless steel
675 A92650	50 Litres	4	395mm	430mm	316L stainless steel
675 A926100	100 Litres	6	470mm	610mm	316L stainless steel
675 A926200	200 Litres	6	570mm	800mm	316L stainless steel
675 A926300	300 Litres	6	710mm	800mm	316L stainless steel

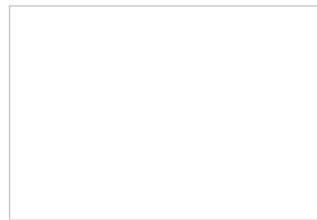
[QUICK QUOTE](#)

[ONLINE PRICING](#)



## Stainless Storage Drums - 316L ss

**New sizes**



Stainless Storage Drums are a new addition to our range. These drums have a very high quality finish and are supplied with sturdy side handles, lid, gasket and clampband.

The robust, hygienic design means they are suitable for the most demanding of applications.

- Open top pharmaceutical and chemical grade drums with lids
- From 5L to 200L (larger sizes on request)
- High quality, heavy duty construction
- Product contact parts 316L stainless steel
- Crevice free interior
- Lid secured with clampband (304 stainless steel)
- Lid gasket - FDA acceptable silicone rubber
- Hygienic top rim
- Supplied with side handles
- Fully welded GMP correct construction



Part No.	Nominal Volume	Internal Diameter	Nominal Height	Material (Body & Lid)	Lid Gasket
675 A12605	5 Litres	196mm	200mm	316L stainless steel	Silicone - FDA acceptable
675 A12610	10 Litres	223mm	280mm	316L stainless steel	Silicone - FDA acceptable
675 A12615	15 Litres	230mm	380mm	316L stainless steel	Silicone - FDA acceptable
675 A12620	20 Litres	298mm	300mm	316L stainless steel	Silicone - FDA acceptable
675 A12625	25 Litres	298mm	379mm	316L stainless steel	Silicone - FDA acceptable
675 A12630	30 Litres	298mm	450mm	316L stainless steel	Silicone - FDA acceptable
675 A12650	50 Litres	393mm	435mm	316L stainless steel	Silicone - FDA acceptable
675 A12675	75 Litres	393mm	630mm	316L stainless steel	Silicone - FDA acceptable
675 A126100	100 Litres	470mm	610mm	316L stainless steel	Silicone - FDA acceptable
675 A126150	150 Litres	570mm	612mm	316L stainless steel	Silicone - FDA acceptable
675 A126200	200 Litres	570mm	800mm	316L stainless steel	Silicone - FDA acceptable

[QUICK QUOTE](#)

[ONLINE PRICING](#)

## Container with Ferrule

These containers are ideal for use with liquids. A hygienic stainless steel drum is fitted with a 1" ferrule (BS4825-3). Containers with Ferrules are the perfect vessel for use in laboratories, production and general work.

The valve (tap) can be clamped on to the ferrule and then be used to empty the container in a controlled manner.



- Manufactured from 316L stainless steel
- Polished
- Robust Construction
- Fitted with a 1" tri ferrule (BS4825-3). Tap can be easily clamped to the container
- Available from stock. Fast delivery worldwide

Note: The tap and accessories are sold separately



## Container With 1" Ferrule



Part No.	Diameter	Height	Material
675 A19605	196mm	200mm	316L ss
675 A19610	230mm	270mm	316L ss
675 A19615	230mm	380mm	316L ss
675 A19620	300mm	300mm	316L ss
675 A19625	300mm	380mm	316L ss
675 A19630	300mm	450mm	316L ss
675 A19650	394mm	431mm	316L ss
675 A19675	394mm	630mm	316L ss
675 A196100	470mm	610mm	316L ss
675 A196150	570mm	610mm	316L ss
675 A196200	570mm	800mm	316L ss

[QUICK QUOTE](#)

[ONLINE PRICING](#)

## Popular Accessories

Part No.	Description
A13610S	1" Butterfly Valve (316L) with silicone seal
A13610A	1" Butterfly Valve (316L) with EPDM seal
A13610B	90° Bend (316L)
A13610C	Clamp
A13610E	Spare EPDM seal
A13610F	Ferrule
A13610SIL	Spare silicone seal



**QAQC LAB**

[www.qclabequipment.com](http://www.qclabequipment.com)

## Tight Head Drums (316L ss)

Volume 10L to 200L

**New**



Tight Head Drums are used throughout the world for handling and storing liquids and oils.

Tight Head Drums are made from hygienic 316L stainless steel. They have a standard 2" bung in the top as well as a second 3/4" bung.

- Range of closed top Drums from 10L to 200L
- 316L stainless steel
- Silicone gaskets (FDA acceptable grade)
- Swaged sides for improved strength
- Made from 1.2mm stainless steel
- Not UN certified

Bottles & Containers

### QUICK QUOTE

### ONLINE PRICING

Part No.	Nominal Volume	Max. Diameter	Nominal Height	Bung Sizes	Material (Body & Bung)	Bung Gasket
675 A26610	10L	260mm	255mm	2" & 3/4"	316L ss	Silicone - FDA acceptable
675 A26620	20L	289mm	401mm	2" & 3/4"	316L ss	Silicone - FDA acceptable
675 A26650	50L	362mm	568mm	2" & 3/4"	316L ss	Silicone - FDA acceptable
675 A266100	100L	458mm	700mm	2" & 3/4"	316L ss	Silicone - FDA acceptable
675 A266200	200L	581mm	886mm	2" & 3/4"	316L ss	Silicone - FDA acceptable

## Trolley

Our stainless steel Drums Trolleys are ideal for moving equipment around the factory. These sturdy trolleys have all wheel steering and two of the wheel are fitted with brakes.

- 304 stainless steel frame
- Includes 4 castors (2 lockable)
- Available from stock for fast delivery



Part No.	Max. Diameter Drum	Deck Height
675 A384320	320mm	135mm
675 A384420	420mm	135mm
675 A384500	500mm	135mm
675 A384600	600mm	135mm
675 A384740	740mm	160mm





## Heavy Duty Buckets (316L stainless Steel)



Stainless Buckets are made from heavy gauge 316L stainless steel and so are very durable.

- Made from 316L stainless steel
- Crevice free interior
- Swing handle
- Flat base
- Not graduated
- Lids sold separately



Part No.	Nominal Volume	Max Diameter	Height	Material
675 A58610	10 litres	300mm	233mm	316L ss
675 A58612	12 litres	310mm	262mm	316L ss
675 A58615	15 litres	330mm	305mm	316L ss
675 A58610L	Lid for 10L Bucket (A586-10) - 316L ss			
675 A58612L	Lid for 12L Bucket (A586-12) - 316L ss			
675 A58615L	Lid for 15L Bucket (A586-15) - 316L ss			

[QUICK QUOTE](#)

[ONLINE PRICING](#)

## Buckets



- Crevice free interior
- Graduated
- Supplied with skirt band
- Robust design
- 304 stainless steel
- Lids sold separately (Lids not available for 6L bucket)



Bucket Part No.	Nominal Volume	Top Diameter	Height	Material
675 A2646	6 litres	280mm	190mm	304 ss
675 A26410	10 litres	300mm	295mm	304 ss
675 A26412	12.5 litres	330mm	315mm	304 ss
675 A26415	15 litres	350mm	360mm	304 ss
675 A26410L	Lid for 10L Bucket (A264-10) -304ss			
675 A26412L	Lid for 12L Bucket (A264-12) -304ss			
675 A26415L	Lid for 15L Bucket (A264-15) -304ss			

[QUICK QUOTE](#)

[ONLINE PRICING](#)

## Buckets with Spouts (316L Stainless Steel)



- Bucket with pouring spout
- Made from 316L stainless steel
- Crevice free interior
- Not graduated
- Swing handle
- Supplied with skirt band
- Drop on lid. Covers the spout completely. Lids sold separately



Bucket Part No.	Nominal Volume	Overall Diameter	Nominal Height	Material
675 A68615	15 litres	310mm	333mm	316L ss
675 A68620	20 litres	330mm	387mm	316L ss
675 A68615L	Lid for 15L Bucket with Spout (A686-15) - 316L ss			
675 A68620L	Lid for 20L Bucket with Spout (A686-20) - 316L ss			

[QUICK QUOTE](#)

[ONLINE PRICING](#)