



QAQC LAB

www.qclabequipment.com

LABORATORY MILL

ARES FML-100



Applicable industries:



Food



Agriculture



Pharma



Reciclyng



Construction



Glass



Chemical

FDA
CE
GMP

SPECIFICATIONS:



Laboratory impact mill for volume and size reduction of hard, semi-hard, and brittle materials such as glass, ceramics, or feed. It is also useful for size reduction of solid and tough materials such as rocks, minerals, or electronic waste, among many others.

- Round perforated screen, available in a wide range of sizes.
- Easily interchangeable screen to optimize equipment preparation time.
- Equipped with four tempered AISI-431 stainless steel blades.
- Constructed from 304 stainless steel.
- Painted steel housing.
- Final particle size adjustable using sieves ranging from 0,5 to 6 mm.



**Product testing recommended depending on material type.*

Controlled by an automation system (PLC) with a touchscreen featuring the following functions:

- Manual control of operating time.
- Automatic time control, with 4 configurable automatic programs.
- 3 selectable languages (Spanish, English, and French).

[QUICK QUOTE](#)

[ONLINE PRICING](#)

INCLUDES:

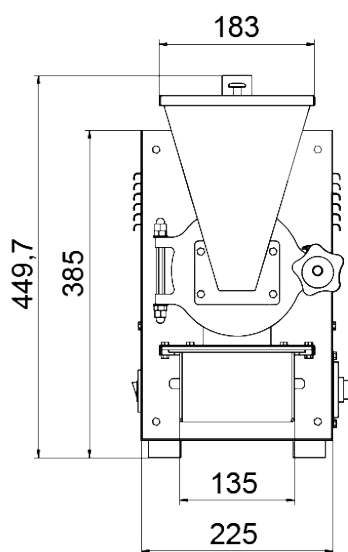
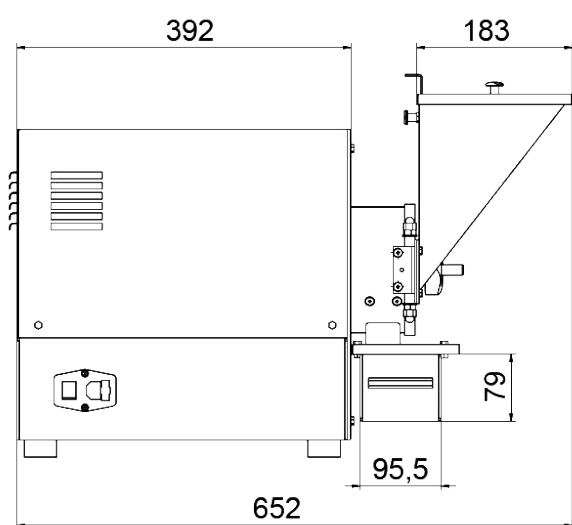
- Hammer mill shredder.
- Power cable.
- Methacrylate collection drawer.
- CE certificate.
- Instruction manual.

TECHNICAL FEATURES:

Voltage (V)	Freq.(Hz)	(r.p.m)	Power (Kw)	Weight (Kg)
220/240	50/60	3000	1,1	35

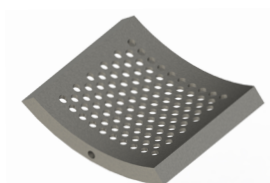
- Feed hopper volume (L): 1.2
- Collection drawer volume (L): 1
- Screens (ømm): From 0.5 to 6
- Maximum hardness (Mohs): 6
- Maximum particle size (mm): 15
- Dimensions (mm): 225 x 600 x 420

DIMENSIONS:



OPTIONAL ACCESSORIES:

Screens



Removal



Cleaning kit

