

Description

Slot Sampler 300 mm

Material of Construction:

316 stainless steel



Outer Diameter of Outer Tube:

25 mm

Inner Diameter of Inner Tube:

17 mm

Overall Length:

337 mm

Slot Length:

55 mm

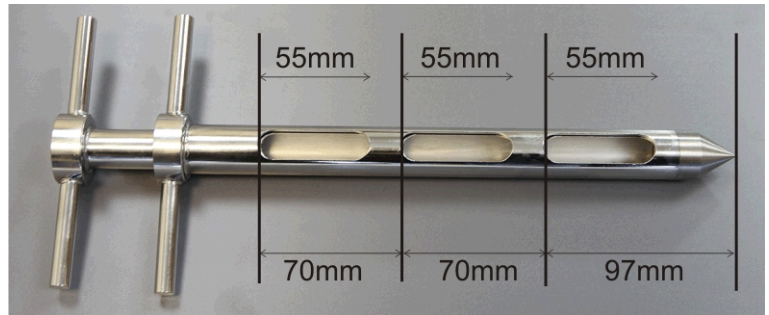
Slot Width:

15 mm

Number of Slots

3

Slot Positions:



External Polish:

<1 Micron Ra

Internal Polish:

None

Nominal Weight of Sampler:

775 g